

perception • precision • persistence



fx

see:detail

independent software testing



ios





Our independence is your assurance

Working in a range of industries and sectors, our Test Team is committed to software testing with relentless precision. Whether the platform your application runs on is a client server, web or mobile based application our detailed testing is aimed at increasing the effectiveness of your software investment. Our Test Team becomes a seamless extension to your development team, but with the clear advantage that independence provides; clarity, objectivity, removal of bias, honest reporting and different assumptions.

Our Test Team are trained to ISEB/ISTQB standard, delivering the following services:

- Test Automation
- Functional Testing
- Compatibility Testing
- Regression Testing
- Usability Testing
- Accessibility Testing
- Exploratory Testing
- Test Script Production
- Reporting

Who do we help?

see:detail provides independence, objectivity and reliable support to all sectors:

- Working outside of the development company, we offer independent quality assurance unaffected by cultural issues (developer and tester sitting side by side).
- We are focussed on the customer's requirements, not the development company's requirements, which will improve the opportunity to provide user-friendly software and enhanced customer satisfaction.
- Risk reduction: Our focus is on detecting defects and recommending potential improvements.
- Our staff are qualified specialists whose focus is testing

What is the value?

- Working with see:detail relieves the costly overhead of employing internal resource when testing is not required, allowing for "peaks" in testing requirements with rapid response.
- We are able to help reduce overall costs in the testing process by providing tools that include a test execution and defect management system as well as trained/qualified testers.
- We are competitively priced. Not only are our services value for money but we offer more flexibility and respond quickly to customer requirements.

Why are we different?

We are proud to be a social enterprise!

Our commercial business model 'see:detail' is based on putting the strengths, talent and unique abilities of people who have Autism Spectrum Condition (ASC) to work as part of our social enterprise, 'Autism Works'.

In the UK, of the estimated 500,000 adults with ASC, 85% are unemployed – most are willing, highly capable and want to contribute to society.

see:detail deliver testing solutions with relentless precision by using the unique abilities – acute attention to detail, a joy of repetition, rote memory, persistence and a curious mind – of its employees.

Where possible, our employees are enabled to live independently and in doing so relieve the benefit burden to the state. With a minimum cost of £32,681 (ref NAO statistics) for an unemployed individual with ASC who is living privately – that is a winning solution to both to our country and to software testing.

To be an effective social enterprise we believe that we must also be an exceptional commercial enterprise.

Why is this important?

The Public Services (Social Value) Act 2012 is a new law which received Royal Assent on 8th March 2012 and was implemented in January 2013. The law calls for all public service commissioning to factor in social value. For the first time, all public bodies in England and Wales, including local authorities, will be required to consider how the services they commission and procure might improve the economic, social and environmental well-being of the area. The aim is that it will transform the way public bodies choose to buy services, and that will help level (or make favourable) the playing field for social enterprises.

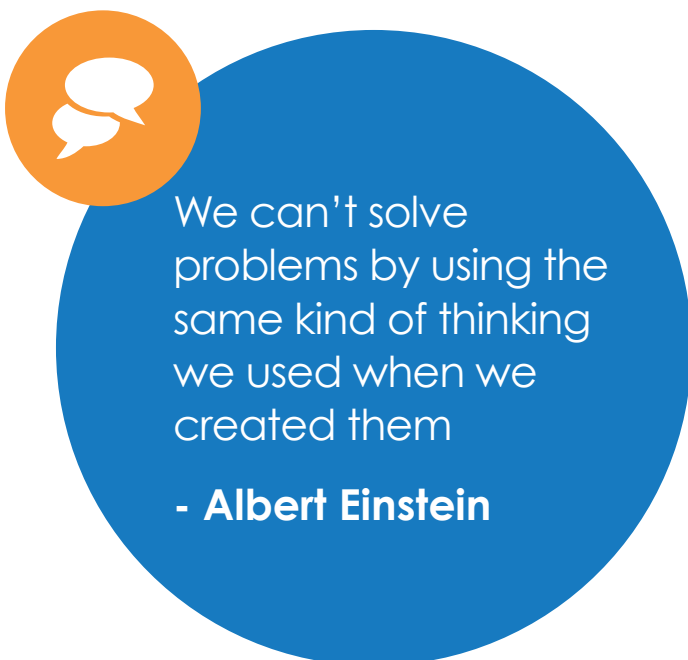
What does this mean for software companies?

As part of the procurement process, software companies working with the public sector will be required to demonstrate their social value.

How can see:detail help?

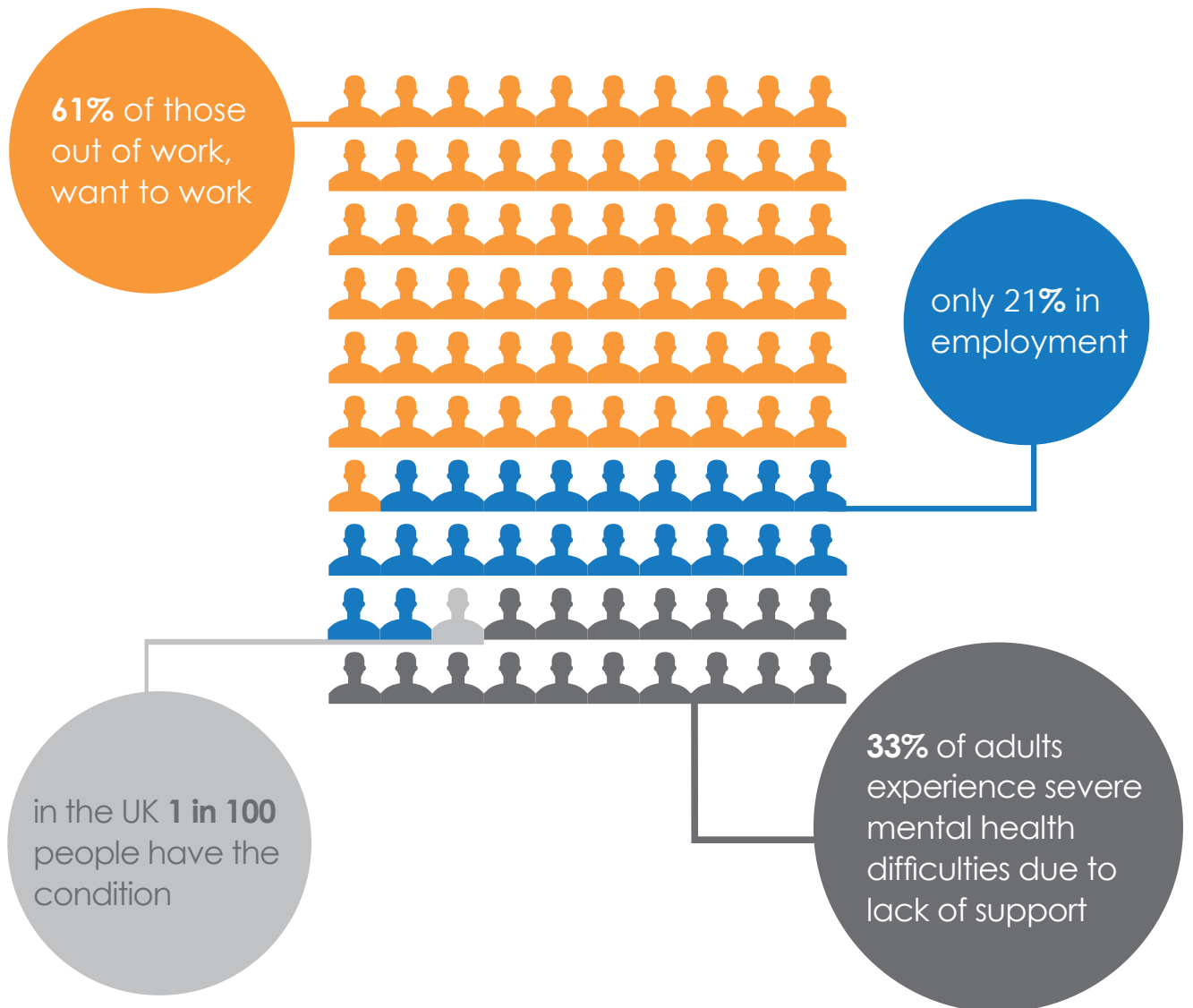
By partnering with see:detail, any companies providing software services to the Public Sector will be able to clearly demonstrate their social value. We are also able to support private companies with their CSR agenda which helps demonstrate to stakeholders that the company operates as a responsible business.

We are happy to help you with your social impact measurement reports using National Audit Office recognised statistics.



The facts

There are over 700,000 people with **Autism** or **Asperger's Syndrome** in the **UK**



What's so special about our team?

Our employees have unique abilities and strengths that we value and can add value to any project:

- Attention to detail
- Reliable
- Persistence
- Precision
- Perception
- Conscientious
- Diligent
- Intelligence
- Methodical
- Loyal
- Unique perspectives
- Tolerance of difference
- High Integrity
- Active and curious mind
- Trustworthy
- Strong ethical code

How can we help you?

Functional Testing

We can help you test software to ensure that it does what it was designed to do with Functional Testing. From Functional Design documentation we can determine test data requirements, test cases, test execution planning and test reporting and can do this even before any software has been developed. In some cases, we can identify problem areas within the design which needs to be addressed prior to coding. Research suggests that detection of defects earlier in the PM process can offer substantial savings by potentially reducing the overall development time. We are a highly curious team and will seek to break the software before the users try to do the same thing. Working in close communication with your development team, we will help to ensure that any areas of concern are addressed and will help you build a clearer picture of the development lifecycle.

Regression Testing

What can be more frustrating to users working with a new version of the software than discovering that the functionality that used to work suddenly doesn't?

We free developers to focus on doing what they do best, creating software and take on the responsibility for carrying out the burden of regression testing. Where new features or modifications are added to a system, we perform target testing on functions that are liable to be broken, exploratory testing to check for oversights that may escape regular use case and requirements-based testing. We can use automation to help test consistency between version releases.

Usability Testing

Even if an IT system is technically perfect, it still needs to be intuitive for its intended users. As an independent test team, we are able to scan for



usability issues and compare the software against industry standard best practice. This allows us to identify areas which are liable to confuse users. In some instances problem areas can be rectified through simple changes to wording or layout. We do not just identify problem areas; we will also make suggestions or recommendations on how they can be overcome. In addition, we can develop and manage remote online usability testing to a wide audience through managed tools which will record heat maps, click streams, and user feedback.


Accessibility Testing

How do you make sure that your software is accessible for anyone? It is easy to create software that is unusable for people with disabilities. [see:detail](#) examines websites against the internationally accepted Web Content Accessibility Guidelines (WCAG) to help you identify any potential problems of accessibility by users with disabilities. Early intervention can help ensure that your product remains accessible to everyone.

Compatibility Testing

How can you ensure that your applications work in a constantly changing world? With different operating systems, browsers, databases, plug-ins, display resolutions, etc., we will test your application against an agreed test plan covering the essential components.

For cross-browser compatibility testing we can devise a series of automated tests utilising Selenium with Firefox, then by pushing our scripts through Sauce Labs we can execute the same tests against Chrome, Safari, Internet Explorer and Firefox, thereby reducing not only our time but also the time for everyone involved in the development cycle.



The world needs different kinds of minds to work together.

- **Temple** Grandin

Talk to us



We are passionate about what we do, how we do it, who we work with and who we work for. If you'd like to know more about how we can help, lets talk!

CONTACT DETAILS

A: see:detail @ Autism Works Ltd
Milburn House
Dean Street
Newcastle upon Tyne
Tyne & Wear
NE1 1LE
T: +44 (0) 191 516 5088
E: info@seedetail.co.uk
W: www.autismworks.co.uk
www.seedetail.co.uk



fx



see:detail

independent software testing

ios





Supported by:



Designed by:



see:detail is a trading name of Autism Works Ltd | Company Registration No: 7402411

Autism Works Ltd is a wholly owned trading subsidiary of the charity Education and Services for People with Autism Ltd

Registered Charity No: 1037868 | Company No: 2909953